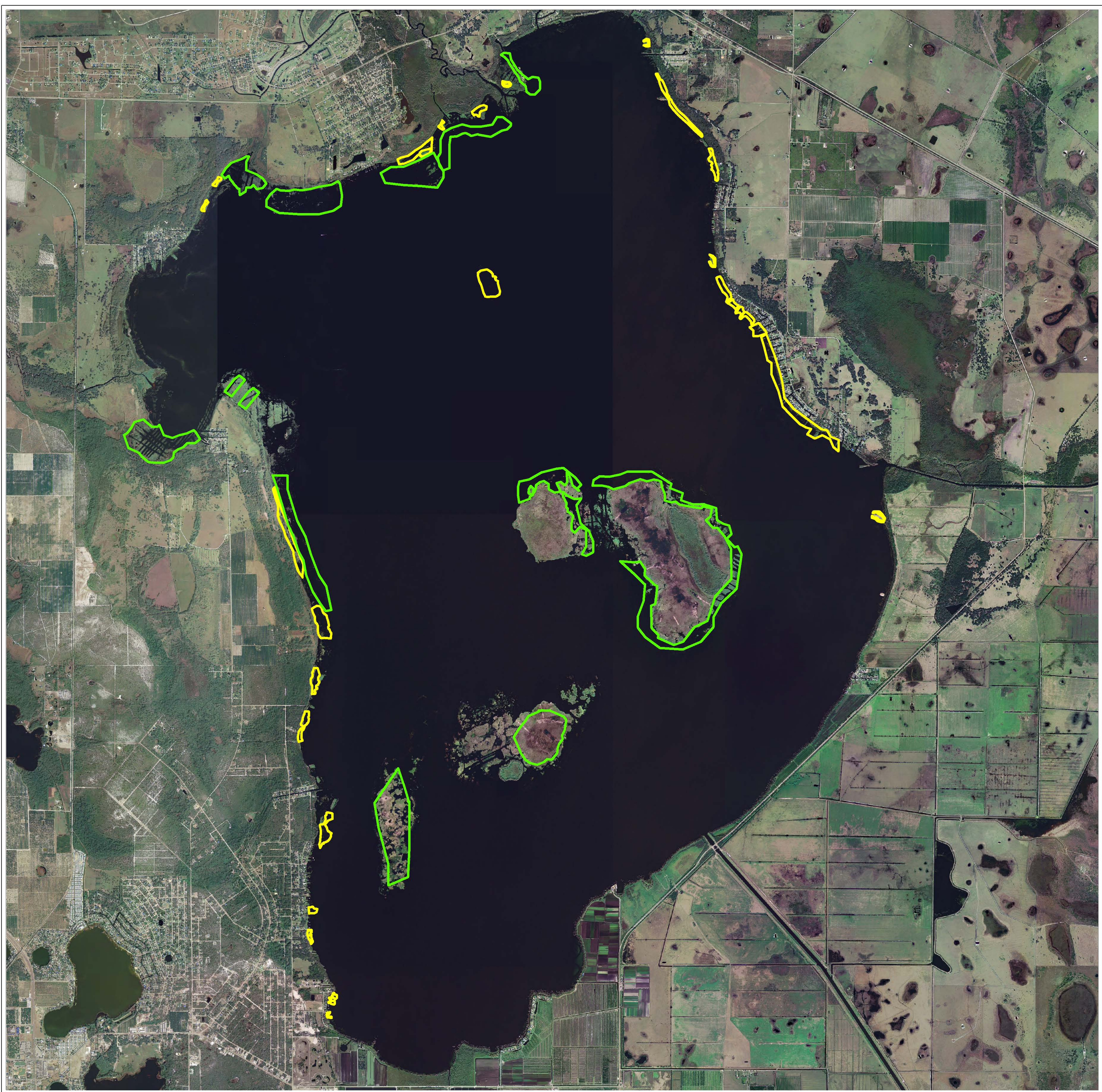




# Lake Istokpoga Fall 2008 Vegetation Control Map



-  Helicopter Application
-  Airboat Application

0 1,250 2,500 5,000 7,500 10,000 Meters

To improve habitat quality for fish and wildlife the northern, western, and eastern portions of Lake Istokpoga, as well as Big Island, Long Island and BumbleBee Island, will be targeted for emergent vegetation treatments starting on September 22, 2008 and extending through October 31, 2008.

Glyphosate and 2,4-D amine will be applied at label rates by airboat (Aquatic Weed Technology) to treat up to 200 acres and by helicopter (Helicopter Applicators Inc.) to treat up to 800 acres. Target vegetation will be invasive, dense emergent vegetation. These treatments will be both small spot treatments and large scale areas. If you need further information contact Steven Gornak of the Florida Fish and Wildlife Conservation Commission at (863)462-5190 (office) or (863) 697-6256 (cell).



Lake Istokpoga FY 08/09 Vegetation Control Map  
Created 8/29/08 by Rob Burnes  
Base Map Created in 2007.  
(Lasted Updated 8/29/08)

